



Oxford Cambridge and RSA

Friday 22 October 2021 – Afternoon

A Level Further Mathematics B (MEI)

Y434/01 Numerical Methods

Printed Answer Booklet

Time allowed: 1 hour 15 minutes



You must have:

- Question Paper Y434/01 (inside this document)
- the Formulae Booklet for Further Mathematics B (MEI)
- a scientific or graphical calculator



Please write clearly in black ink. **Do not write in the barcodes.**

Centre number

--	--	--	--	--

Candidate number

--	--	--	--

First name(s)

Last name

INSTRUCTIONS

- Use black ink. You can use an HB pencil, but only for graphs and diagrams.
- Write your answer to each question in the space provided in the **Printed Answer Booklet**. If you need extra space use the lined pages at the end of the Printed Answer Booklet. The question numbers must be clearly shown.
- Answer **all** the questions.
- Where appropriate, your answer should be supported with working. Marks might be given for using a correct method, even if your answer is wrong.
- Give your final answers to a degree of accuracy that is appropriate to the context.

INFORMATION

- This document has **16** pages.

ADVICE

- Read each question carefully before you start your answer.

1(a)(i)	
1(a)(ii)	
1(b)	

2(a)

x	$f(x)$	Δ	Δ^2
1	-0.65		
2	-0.35		
3	1.77		
4	5.71		
5	11.47		

2(b)

2(c)

3(a)	
3(b)	
3(c)	

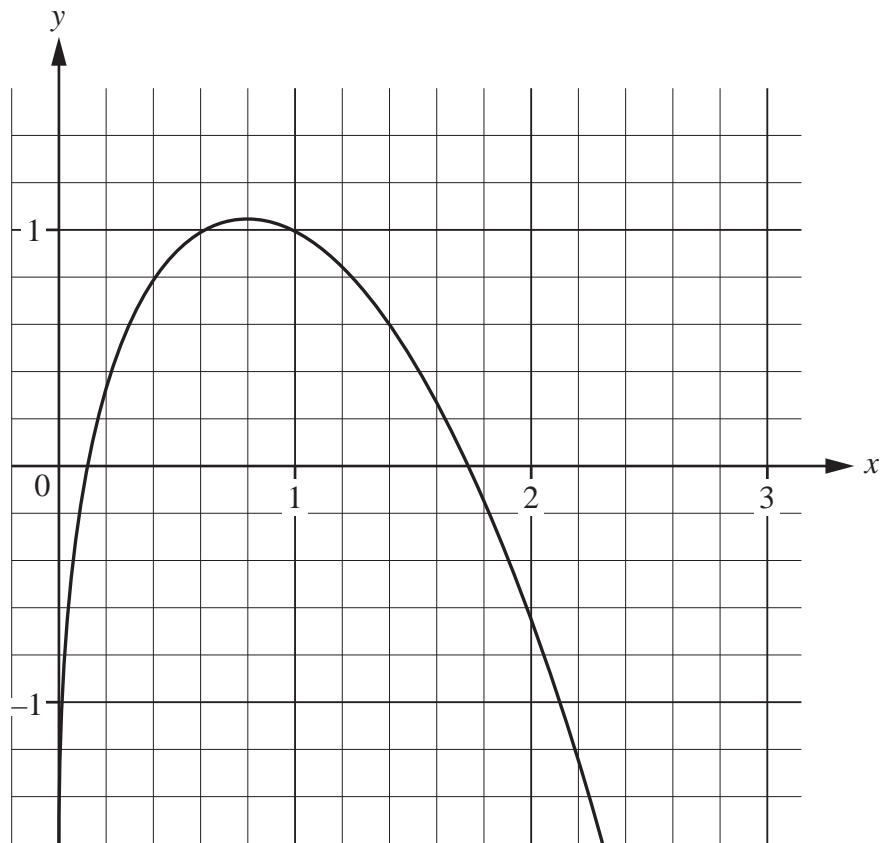
3(d)	

4(a)	
4(b)	

5(a)	
5(b)	
5(c)	

5(d)	
5(e)	
5(f)	

6(b)



6(c)

6(d)

6(e)	

6(f)	

7(a)	
7(b)	
7(c)	
7(d)	

7(e)	
7(f)	

